



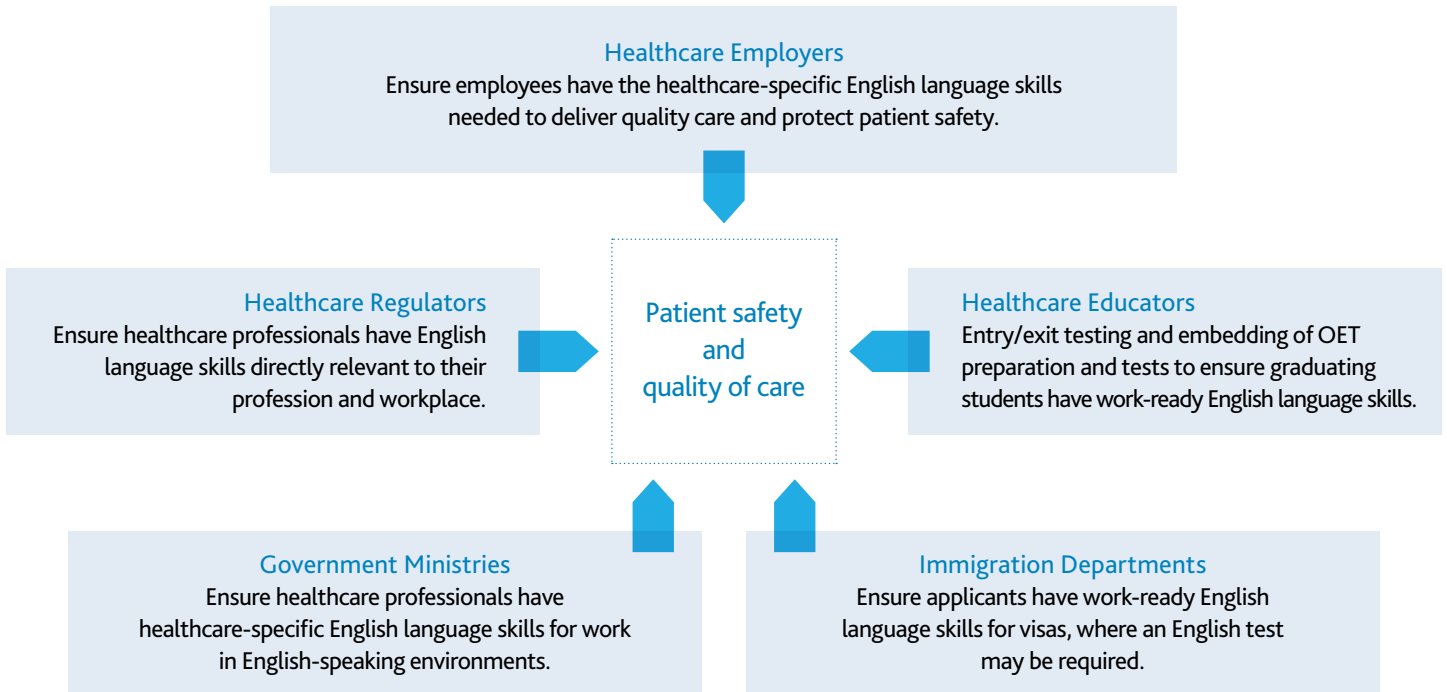
# OET in the healthcare sector

The Occupational English Test (OET) assesses the language proficiency of healthcare professionals seeking to register and practise in an English-speaking environment.

OET is recognised as proof of English proficiency in the UK, Ireland, Australia, New Zealand, Dubai, Namibia and Singapore for registration in 12 healthcare professions. OET is also accepted by the Australian Department of Immigration and Immigration New Zealand for all visa categories where an English language test result may be required, as well as major health educators and recruiters. Unlike other English tests, OET assesses writing, reading, speaking and listening skills using real healthcare scenarios, helping candidates develop language skills for success in healthcare courses, healthcare registration and the workplace.

## Why OET is used by regulators, educators, employers and immigration

OET helps regulators, employers and educators select healthcare professionals with the right level of English proficiency to deliver safe and high quality care by optimising communication with patients, carers and colleagues.



## What are the benefits of using OET as proof of English proficiency?

- ✓ Ensuring patient safety and improving quality of care by optimising communication with patients, carers and colleagues.
- ✓ Reducing the training burden for hospitals and other employers.
- ✓ Establishing a fair way to select internationally trained health professionals.
- ✓ Attracting candidates committed to excellence and professionalism.

## About the test

OET assesses the English language skills of 12 health professions: dentistry, dietetics, medicine, nursing, occupational therapy, optometry, pharmacy, physiotherapy, podiatry, radiography, speech pathology, and veterinary science. OET is available monthly, in over 40 countries. OET maintains a highly secure online registration and results system. Candidates apply for the test online and results are released 16 business days after the test.

## OET tests writing, speaking, reading and listening skills using real healthcare scenarios



### Writing (45 minutes)

Writing a profession-specific letter of referral or discharge; or a letter to inform or advise a patient/carer/group.



### Speaking (20 minutes)

Profession-specific scenario role-plays with an interlocutor who plays the part of a patient/relative/carer.



### Reading (60 minutes)

Completion of a health-related summary paragraph and multiple choice questions on a longer health-related text.



### Listening (50 minutes)

Note-taking on a recorded professional consultation and a range of questions on a health-related talk.

## How is OET different to general and academic English tests?

OET tests real communication scenarios candidates will meet in the healthcare workplace, whereas other tests assess English language skills using everyday scenarios.

## Why candidates choose OET

**Recognition** | OET is accepted by healthcare regulators in the UK, Ireland, Australia, New Zealand, Dubai, Namibia and Singapore for registration purposes, and both the Australian and New Zealand Immigration for all visa categories.

**Support** | OET provides a wide range of preparation resources, many of which are online and included in the cost of the test.

**Confidence** | OET is recommended by past test takers because preparation and test materials reflect real healthcare scenarios, which leads to increased confidence on test day.

**Relevance** | OET helps candidates develop the language skills and confidence to communicate in the healthcare workplace.

## How OET is used by healthcare educators

**Admission** | OET results can be used as proof of English proficiency for students applying to take a healthcare course taught in English.

**Preparing work-ready graduates** | OET preparation materials and tests can be embedded into healthcare courses to raise the English language skills of students up to the necessary level for registration and employment on graduation.

## How OET is used by healthcare regulators and healthcare employers

**Proof of proficiency** | Healthcare regulators use OET results as proof of the required level of English language proficiency for registration and employment in English-speaking healthcare environments.

**Grades accepted** | Most healthcare regulators accept an A or B grade in each subtest for registration purposes, but exact requirements need to be checked with individual regulators.

OET grade	Description of ability	IELTS equivalence
A	Very high level of performance	8.0–9.0
B	High level of performance; i.e. able to use English with fluency and accuracy adequate for healthcare registration <sup>1</sup> , appropriate visa categories, healthcare courses and workplaces	7.0–7.5
C+	Very good level of performance; adequate for appropriate visa categories, healthcare courses and workplaces	6.5
C	Good level of performance; adequate for appropriate visa categories, some healthcare courses and workplaces	5.5–6.0
D	Moderate level of performance: requires improvement	4.0–5.0
E	Low level of performance: requires considerable improvement	–

<sup>1</sup> Check with the relevant professional body or organisation to find out the minimum OET grade level required for registration.

## Validity and reliability

OET is highly secure and results can be independently verified by accepting organisations using the online results verification service. Underpinned by over 30 years of extensive research, the validity and reliability of OET is regularly monitored, and tests are regularly updated in consultation with researchers from Cambridge Assessment English, leading Australian Universities and healthcare experts.

Research has shown that “OET test takers are perceived as effective communicators able to communicate on matters that are both technical and emotional and who can use lay language so that patients can easily understand what they are saying”.

Source: Stakeholders Perceptions of Occupational English Test (OET) Vidakovic and Khalifa (2013).

### OET Case Study

## Flinders University

The Intensive English Language Institute (IELI) offers English language training and testing under agreement with Flinders University, Australia. Flinders University offers a range of healthcare courses for domestic and international students. IELI has been an Authorised OET Test Venue since 2013.

### Flinders University OET Test Venue and Preparation Venue

A major component of IELI's syllabus is a healthcare communication English course, incorporating OET preparation. Courses run between 3-10 weeks, both on campus and remotely via online and Skype. Being both a Test and Preparation Provider offers students a convenient and satisfying experience.

### Student testimonial

## “Successful completion of OET shaped my career”

### Hardik Patel, Nurse

Hardik Patel studied Nursing at Flinders University and passed OET during his final year of clinical studies, allowing him to apply for registration with the Nursing Board of Australia.

Like many OET candidates, preparing for OET gave Hardik long-term benefits of improving English for his career.

Hardik's video testimonial:

[www.occupationalenglishtest.org/hardik-patel](http://www.occupationalenglishtest.org/hardik-patel)



## About OET

The Occupational English Test (OET) assesses the language proficiency of healthcare professionals seeking to register and practise in an English-speaking environment. OET is accepted in the UK, Ireland, Australia, New Zealand, Dubai, Namibia and Singapore for registration. OET is also accepted by the Australian Department of Immigration and Immigration New Zealand for all visa categories where an English test may be required.

OET is owned by Cambridge Boxhill Language Assessment Trust (CBLA), a venture between Cambridge Assessment English and Box Hill Institute. Cambridge Assessment English, part of the University of Cambridge, helps millions of people learn English and prove their skills to the world. Box Hill Institute is a leading Australian vocational and higher education provider.



**Cambridge Assessment  
English**



**BOX HILL  
INSTITUTE**

## Talk with OET

To find out more about OET, contact us or go to: [www.occupationalenglishtest.org/organisations](http://www.occupationalenglishtest.org/organisations)

### OET Business Development

The OET Centre

[stakeholders@oet.com.au](mailto:stakeholders@oet.com.au)

Telephone +61 3 8656 4000